



PRESTON

FLOORPLAN

2737 Square Feet

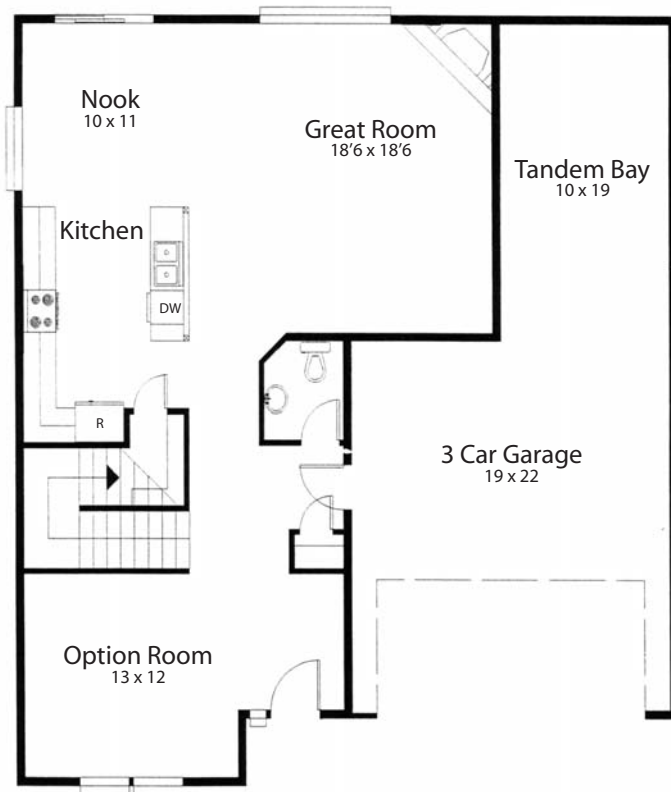
www.WestBrookNW.com



Elevations subject to change

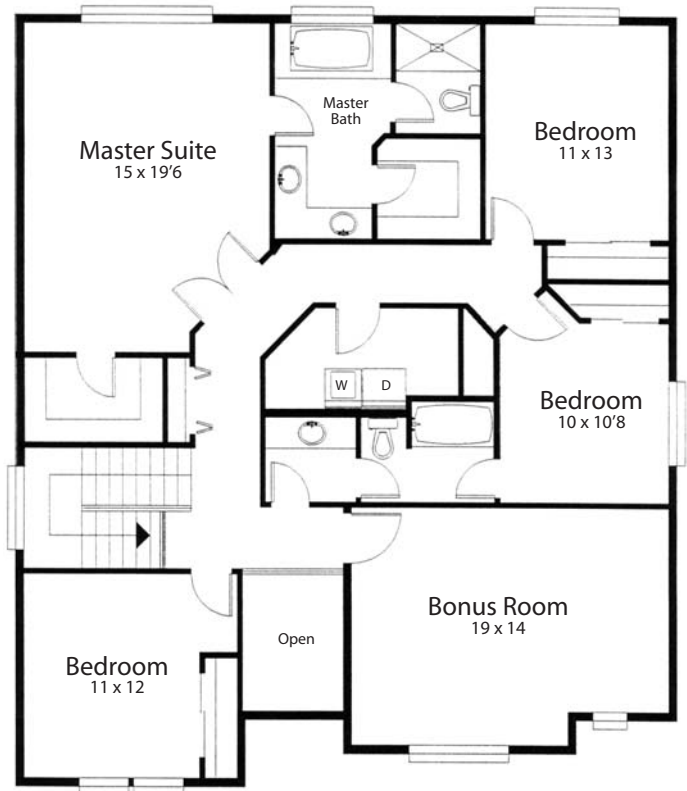
Main Floor Plan

1095 square feet



Upper Floor Plan

1640 Square Feet



STANDARD FEATURES

- Maple cabinets
- Plumbed for refrigerator / icemaker
- Kitchen pantry (selected models)
- Islands in most kitchen models
- Dishwasher and gas range with microwave hood
- Formica countertops with tile backsplash
- 9' ceilings in downstairs on most models
- Gas fireplace with tile hearth and wood mantle
- Decora light switches
- Rounded sheetrock corners
- Insulated windows
- White millwork on doors
- 5 cable and 5 cat-5 phone wires
- 50 gallon gas hot water tank
- Finished and insulated garages w/ electric garage door opener
- 30 year composition roof
- HardiPlank or Certainteed siding
- Concrete driveway and walkway
- Front yard landscaping with sprinkler system
- 10' x 12' concrete patio with each home
- Homeowners manual
- 2-10 year limited home warranty